

WAVERLEY
Christian College

PROSPECTUS

Narre Warren South • Wantirna South

Waverley Christian
College's vision is
to see a generation
of young people
impacting their
community, our
nation and the
world for the *Lord
Jesus Christ.*



Principal's Welcome

We exist to see a generation of young people impacting their community, their nation and the world for the Lord Jesus Christ.

This is a gospel focused vision that compels us to take young people on an educational journey that is others focused, equipping and encouraging them to bring God's love, grace, mercy, compassion, reconciliation and restoration to the World.

Describing ourselves as a *Faith Learning Community*, our mission is to provide Christian families with the opportunity to have their children educated and nurtured from a Christ-centred, Biblical perspective, and to prepare young people for effective ministry and service within society.

Using our Four Loves Framework; *Love God, Love Others, Love Life, Love Learning* and underpinned by our core values of Love, Faith, Wisdom, Community, Integrity, Respect and Excellence, our educational program provides rich opportunities for social, emotional, physical, academic and spiritual development.

If you are a family of faith, believing in the Lordship and saving grace of Jesus Christ and want to see your children nurtured in their faith and challenged to learn to be a responsive disciple, then I encourage you to explore further what we have to offer.

Rod Ramsay
Principal

Who We Are

One College, *Two Campuses*

Waverley Christian College is dedicated to providing students with high-quality education, grounded in Christian faith and values. Guided by our Four Loves Framework – Love God, Love Others, Love Learning and Love Life – each student has the opportunity to flourish spiritually, socially, emotionally, physically and academically.

Our curriculum is taught from a Biblical perspective, with Christian values forming the foundation of all we do. Staff are deeply committed to living out the College's Christian ethos, guiding students to grow in their personal faith, serve their communities, and show respect and compassion towards others.

We seek to help students feel welcome from the very start of their school life. Our students benefit from an outstanding learning environment, supported by caring staff who are passionate about helping each child reach their potential. The College is well regarded for the strong academic achievements of its Victorian Certificate of Education (VCE) students, with most gaining entry into their preferred university courses each year. For students pursuing alternative pathways, we offer a range of meaningful options through Victorian Certificate of Education - Vocational Major (VCE-VM) and Vocational Education and Training (VET) programs.

Narre Warren South

Prep to Year 12



Wantirna South

Kindergarten to Year 12





Narre Warren South

The Narre Warren South Campus is located in the City of Casey, which is recognised as one of the fastest growing municipalities in Australia. The population in this area is projected to exceed half a million by the year 2036.

Our campus itself spans 10 acres and features contemporary facilities designed to support student learning. We provide education from Prep through to Year 12, allowing students to select either the Victorian Certificate of Education (VCE) or the Vocational Major as their senior pathway. We consider it a privilege and a blessing to deliver Christian Education to both existing and future families residing in the City of Casey and its neighbouring suburbs.

At the heart of our approach is the belief that every child is unique and made in God's image. We offer a comprehensive learning support program, including our SPARC initiative in secondary school, which provides an alternative educational pathway for students.

We aspire for our Narre Warren South Campus to stand as a beacon, shining brightly for Jesus as a community built on faith, hope, and love. Our aim is to positively impact everyone we meet, so that all can experience the richness of life that comes from knowing God and understanding His plan for each of us.





Wantirna South

The Wantirna South Campus is beautifully situated along the natural setting of Blind Creek, providing a peaceful environment that complements learning and community life.

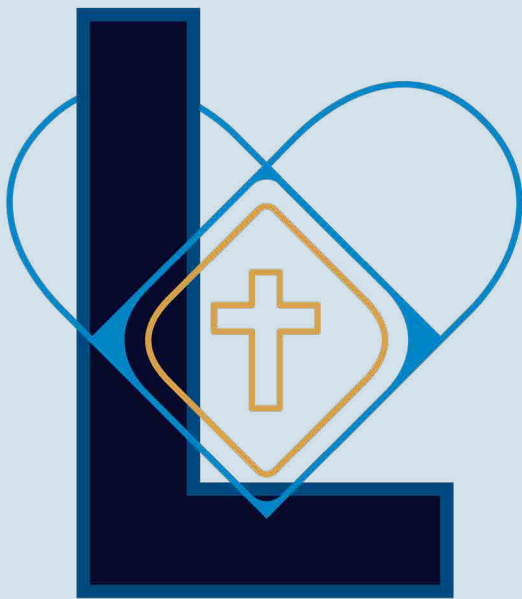
Offering 4-year old Kindergarten to Year 12 program, including Victorian Certificate of Education (VCE) and the Victorian Certificate of Education Vocational Major (VCE-VM), the campus provides students with a broad range of pathways to explore their gifts and prepare for future success.

Our Wantirna South campus is vibrant and diverse, reflecting a rich multicultural community where students from many backgrounds come together. Central to its mission is the belief that education is not only about academic achievement but also an opportunity to deepen Christian faith and practice, encouraging students to grow spiritually while developing their talents and knowledge in a supportive, Christ-centred environment.





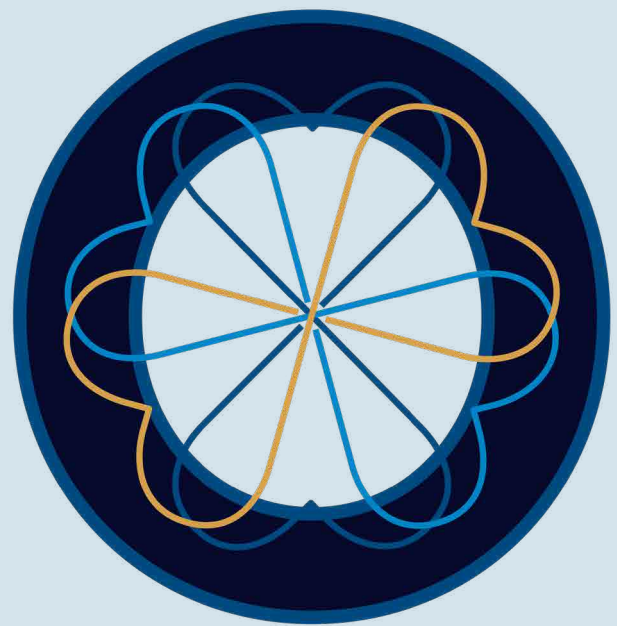
The Four Loves at Waverley Christian College



LOVE GOD *with Zeal*

We believe the most important calling for every person is to love God with all their heart, soul, mind and strength. At Waverley Christian College, we intentionally create opportunities for students to know God, understand His story, and allow His truth to shape their lives.

Students are encouraged to explore the Christian faith deeply, through biblical teaching, worship, prayer and spiritual disciplines, so that faith is not simply learned, but lived. We seek to nurture authentic relationships with God, trusting the Holy Spirit to transform hearts, character and purpose. Loving God with zeal means our faith is active, meaningful and central to who we are.



LOVE OTHERS *with Courage*

Flowing from our love for God is a genuine commitment to love others. Every person is created in the image of God and holds infinite value, and our community reflects this belief through care, respect and compassion.

At Waverley Christian College, students learn to treat others with kindness, humility and courage. They are encouraged to listen well, show empathy, act justly and love generously; even when it is challenging. We foster a culture where relationships matter, differences are respected, and students are empowered to serve both within the College and beyond it. Loving others shapes students into people who care deeply about the wellbeing of others and the world around them.

A Framework That Shapes Everything We Do

The Four Loves shape our teaching, relationships, leadership and culture. They guide how we educate, how we care for students, and how we partner with families.

Our goal is to graduate young people who:

- Know and love God deeply
- Care genuinely for others
- Approach life with faith, joy and purpose
- Engage learning with curiosity, wisdom and excellence

This is education that is faith-centred, others-focused and grounded in love.



LOVE LIFE *with Humility*

We want our students to love life, not in a shallow sense of happiness, but in the deeper, biblical understanding of a flourishing life found in Christ. Jesus promises life to the full, and we believe this fullness comes from knowing our identity, security and purpose in Him.

Students are taught that life has meaning beyond self-achievement. Through faith, character development and community, they learn how to live well, make wise choices, and grow in resilience, gratitude and hope. Loving life with humility means recognising that we are created for relationship with God, and with others, and that true fulfilment is found in serving something greater than ourselves.



LOVE LEARNING *with Wonder*

Learning at Waverley Christian College is an act of worship. We encourage students to love learning by developing curiosity, wonder and wisdom as they explore God's world.

Students are invited to marvel at creation, ask deep questions, think critically and engage thoughtfully with knowledge, always through a biblical lens. Learning is not just about acquiring information, but about understanding how God's truth applies to life. By nurturing wonder, students become lifelong learners who seek wisdom, pursue excellence and use their learning to make a positive impact in the world.

What is a *Waverley Student*?

A Waverley student comes to school each day to do more than just learn. They are known, valued and deeply nurtured within a Christ-centred learning community where faith and learning are woven into everyday life.

Guided by caring and dedicated teachers, students are encouraged to think deeply, strive for excellence and discover the joy of learning with their whole heart. Classrooms are places of curiosity and purpose, where each child's gifts are recognised and cultivated, building strong academic foundations alongside confidence, resilience and a genuine love of learning.

Life at Waverley Christian College is rich with connection, meaning and hope. Shaped by our Four Loves, students are invited to live out their faith with authenticity, compassion and courage. Classes taught from a Biblical worldview, weekly Chapel, service and leadership opportunities encourage students to see learning as a way of serving something greater than themselves. Friendships are formed, character is shaped and a strong sense of community grows as students journey together through the College.

Whether a student is just beginning their learning journey or preparing for graduation, families can be confident that Waverley Christian College students are building strong character on godly foundations. They leave as lifelong learners, well prepared for the future, inspired by purpose, and equipped to make a meaningful difference in the world.



Kindergarten (Wantirna South)

Building foundations for lifelong faith & learning

Our 4-year old Kindergarten program places God at the centre of every experience nurturing children's curiosity, creativity, and character in a play-based, Christ-centred environment.

Waverley Christian College Kindergarten is the first step in formal education, where children learn at their own pace through hands-on, play-based activities. Guided by Biblical principles, our program places God at the centre of every aspect, with daily prayer, Bible lessons, and encouragement to practice Christian values. Educators partner with families to develop Christ-like character, fostering independence, creativity, and a passion for learning. The transition to Prep is supported through close connections with the College, ensuring children feel confident and familiar with their new environment.



Our Philosophy

At Waverley Christian College Kindergarten, we partner with families to nurture Christ-like character as children explore God's world together.

We believe children learn best through hands-on, play-based experiences. Our program encourages independence, creativity and a love of learning, helping each child grow in confidence and in their relationship with their Creator.

Loving God and loving others are the foundations of our community and shape all we seek to be and do, as we learn and grow together in the grace of the Lord Jesus Christ.

First Steps

As the first step in formal learning, the program is designed to help children grow academically and spiritually, encouraging them to see education as part of their faith development. Children take part in daily prayer times, Bible lessons and are encouraged to practice Christian values in their day-to-day interactions with one another.

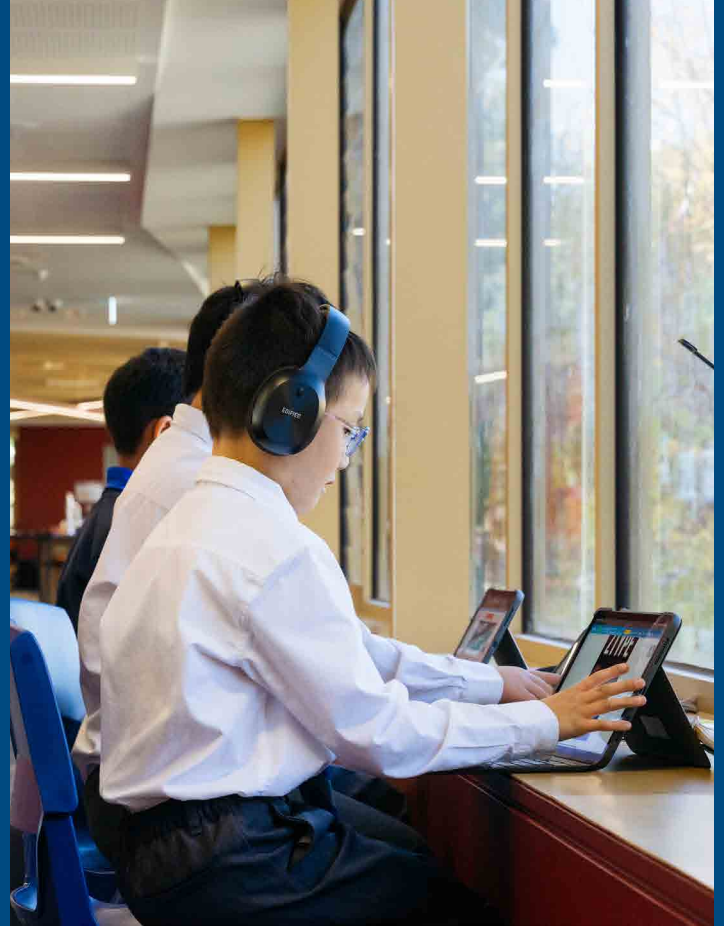
A key focus is InitialLit-F, an evidence-based and engaging approach that explicitly teaches reading and related skills in a fun, interactive way during their first year of school. The Kindergarten week is thoughtfully structured into two and a half days, giving children the right balance between time at home and time at school, ensuring they develop confidence, curiosity, and a love of learning in a supportive, Christ-centred environment.





Primary School

Nurturing individual gifts in a caring Christian community



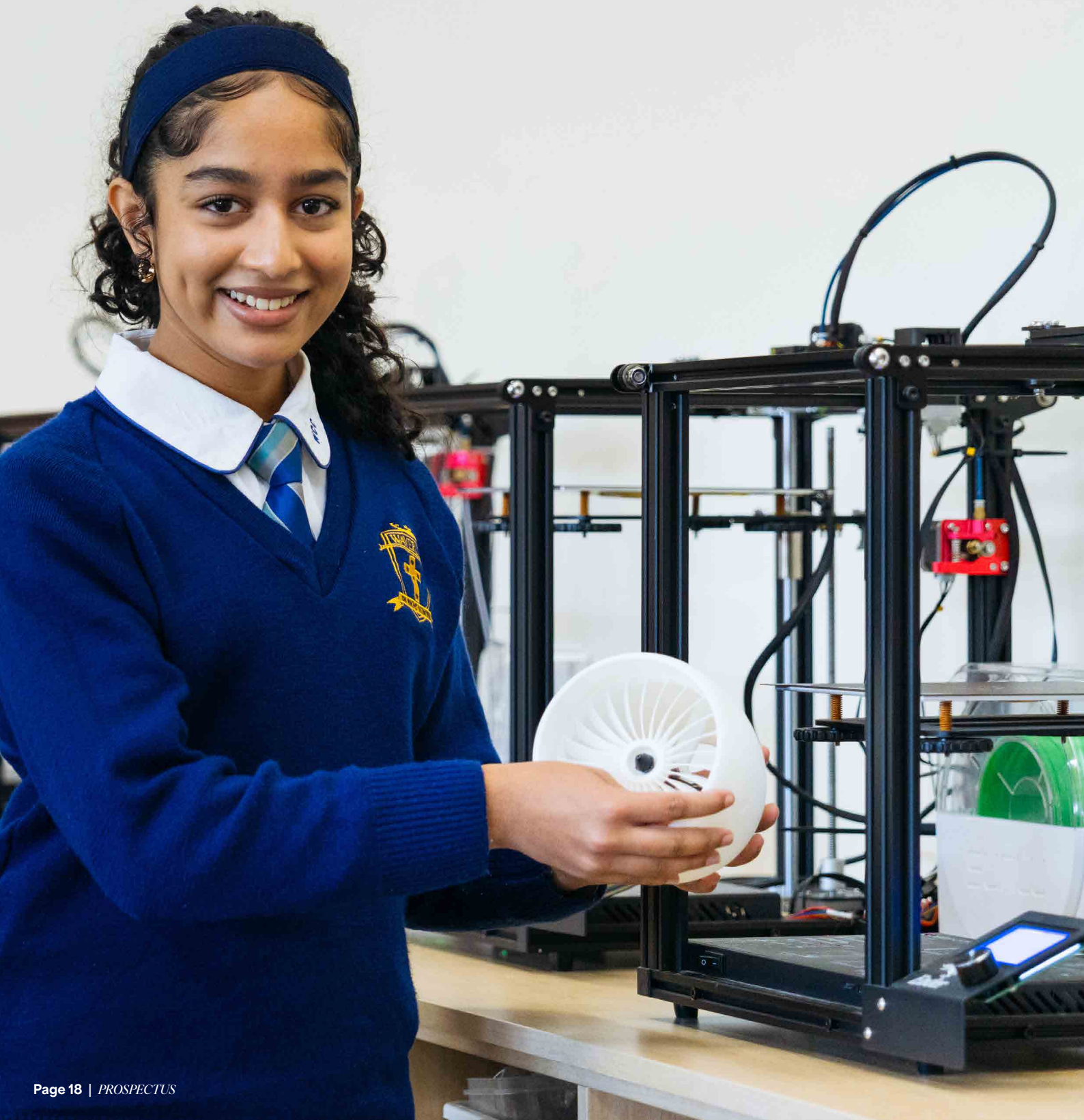
We help every child recognise and develop their unique talents, combining high academic standards with Christian values and pastoral care, so students flourish in faith and learning.

From the very start, we provide a welcoming, stimulating environment tailored to each student's needs. Strong emphasis is placed on Numeracy and Literacy, with specialist lessons in Art, Digital Technology, Drama, Library, Languages (Chinese and French), Music, and Physical Education.

Communication between home and school is a priority, with regular updates and opportunities for parent involvement.

Secondary School

Empowering students to pursue excellence and purpose in Christ



Our Secondary School equips students to explore their God-given abilities, achieve academic success, and grow spiritually through broad curriculum and faith-based opportunities.

Each student is valued as an individual, with a unique set of gifts and abilities. The curriculum includes core subjects in Biblical Studies, Chapel, English, Humanities, Mathematics, Physical Education, Personal Development, and Science. Students select from a wide range of electives in Years 8-10 and acceleration opportunities in Year 10. At the Victorian Certificate of Education (VCE) level, over 20 studies are offered, including VCE Vocational Major (VM) and Vocational Education and Training (VET) courses.

All students participate in Chapel, Bible, and Personal Development classes, ensuring all learning outcomes are supported by spiritual growth and faith formation alongside academic achievement.



Learning Opportunities

Our curriculum is grounded in God's truth and designed to reveal His character through every academic subject. We combine a Biblical worldview with proven educational frameworks, nurturing students to grow in faith, wisdom, and understanding.



Co-Curricular

Arts
Sports
Enrichment
Experiential Learning

At Waverley Christian College, co-curricular learning is integral to our vision of building a faith learning community with heart and mind, for the sake of others. Students are encouraged to pursue excellence and wonder through activities in music, drama, sport, visual arts, and experiential learning.

Leadership and service opportunities help students develop respect, humility, and courage, while collaborative projects and clubs build a strong sense of belonging and community. Our holistic approach ensures that learning extends beyond the classroom, cultivating faith, wisdom, and integrity. Students are empowered to grow in relationship with Christ, engage with the world, and serve others with compassion and purpose, supported by strong partnerships with families and the wider community.



Wellbeing

We recognise that student wellbeing and learning are closely connected. Research consistently shows that when students feel supported emotionally and spiritually, they are better able to engage, learn, and thrive. For this reason, pastoral care and emotional wellbeing are integral to every aspect of life at Waverley Christian College encouraging each student to grow in confidence, character, and faith.

Every student is known, valued, and supported through a caring network that begins with their Home Group or Classroom Teacher, who provides the first level of daily care. Year Level Coordinators offer additional guidance and support, while each campus is also served by Student Wellbeing Coordinators and a dedicated School Chaplain.



Enrichment

At Waverley Christian College, we believe every student has unique, God-given gifts and talents that deserve to be nurtured and developed. Our enrichment programs are designed to foster critical and creative thinking, encourage inquiry, and provide opportunities for students to excel beyond the standard curriculum.

Primary

Identified students in Years 1-6 participate in an enrichment program, engaging in inquiry-based projects that explore 'big ideas' and real-world contexts. These projects cultivate higher-order thinking, research skills, and creative problem-solving. Students are encouraged to work independently and collaboratively, applying knowledge to real-life problems, making connections, and considering multiple perspectives. The program uses a framework of thinking tools such as exploring trends, patterns, ethics, and multiple perspectives to deepen understanding and complexity.

Secondary

In secondary years, students benefit from mentoring, faculty-based extension programs, and advanced classes in a variety of areas. Students also participate in a wide range of competitions and inquiry activities across disciplines, including debating, science challenges, creative writing, and technology innovation.

Clubs & Competitions

There are many Club and competition opportunities available, such as Chess Club, CSEN Masterminds, Debating Club, Science Talent Search, and the Australian Mathematics Trust Competition allow students to extend their learning, develop teamwork, and celebrate academic achievement.



The Arts

Our Arts program fosters imagination and skill, providing students with a powerful voice to share their ideas, emotions and stories with the world.



Music

The Music program is a vibrant part of Waverley Christian College. From the early years, students develop skills in listening, singing and playing through classroom music. A strong instrumental program of both individual and private lessons builds confidence, technical skill and a lifelong love of music.

As students grow, they can join ensembles including String Ensemble, Concert Band, choirs, Chapel Band and Worship teams. Regular performances at College and community events encourage students to use their God-given gifts in service and worship.

Productions

Students in Years 5-12 can participate in College productions, alternating between primary and secondary each year at each campus. Productions foster teamwork, creativity and community, while giving students opportunities to express faith, values and purpose through performance.

Visual Arts

Our Visual Arts program encourages students to explore creativity and express faith through a range of mediums. Visual arts is embedded across subjects and co-curricular opportunities, including the secondary Art and Design Club and Annual Exhibition. Students are supported to experiment, develop skills and appreciate the beauty of God's creation.

Dance (Wantirna South)

Our Dance programs nurture movement, creativity and worship. The Steps of Faith Creative Dance Studio (Prep-Year 6) offers ballet, jazz and lyrical dance in a Christ-centred environment, while secondary students can join Dance Club. Through performances at College and community events, students grow in confidence, teamwork, and joy as they use dance to honour and praise God.



Sports

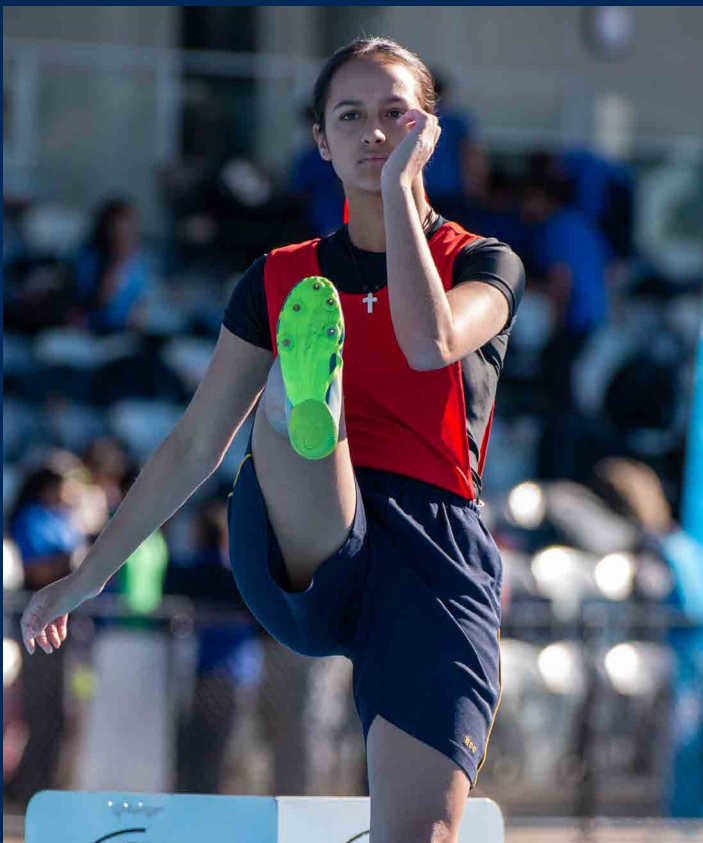
Sport and physical education are central to student life at Waverley Christian College.

All students from Prep to Year 10 study Physical Education, developing movement skills, teamwork and a lifelong appreciation for health and fitness. From Years 5-10, students also participate in regular interschool sport with coaching and training to support both enjoyment and achievement.

Primary students compete in School Sport Victoria (SSV) and Christian Schools Events Network (CSEN) competitions, while secondary students represent the College in CSEN events. Additional invitational events provide further opportunities to grow in skill, sportsmanship and community.

A range of sporting clubs and programs are available. Primary students can join Soccer Academy and Swimming Squad, while secondary students can participate in Athletic Development and focused sports programs including Badminton, Basketball, Soccer and Volleyball. These opportunities welcome students of all abilities in a supportive environment.

House sporting competitions are a highlight of the year, building school spirit and healthy rivalry. Throughout our entire sports program at Waverley Christian College, students are encouraged to honour God by pursuing excellence, building resilience, teamwork, and participation.





Experiential Learning

Camps and Year Level Experiences

Students in Years 3-7 participate in annual year level camps, building independence, resilience, developing their faith and strengthening peer relationships.

In **Year 9**, students engage in a unique program designed to challenge and inspire. The program encompasses hiking activities, city experiences and an interstate camp. Service learning opportunities are a central component for students in the Year 9 program.

Year 10 students take part in distinct boys' and girls' programs, each tailored to support personal growth, leadership and character development. Additionally, students participate in a careers development program throughout the year and undertake a week of Work Experience.

Year 11 and 12 students are provided the opportunity to participate in camps designed for their year levels which focus on leadership development, community engagement and personal growth.

The Duke of Edinburgh's International Award

The College offers The Duke of Edinburgh's International Award, an internationally recognised program that empowers students to develop skills, serve their community, and undertake adventurous journeys. Through this award, students build confidence, resilience, and a sense of achievement. This program is available to students in Years 9 through 11.





Experiential learning at Waverley Christian College is designed to extend education beyond the classroom, offering students hands-on opportunities to grow in faith, leadership, and service.

Local, National and International Service Learning

Throughout each year, students engage in practical service-learning experiences both nationally and internationally. Through these opportunities, students are encouraged to step beyond their comfort zones, embrace challenges and reflect on their experiences through Christian values. These authentic experiences help students develop practical skills, deepen relationships and discover their unique purpose in God's story, supporting them to flourish academically, spiritually and socially as they learn to serve and lead with integrity in their communities.

Each year, students in Years 9-11 have the opportunity to participate in a study tour to China, deepening their cultural understanding and language skills.

Nationally, we partner with Kluthuthu Christian College in Cape York Peninsula, fostering meaningful connections and shared learning experiences.

Regular service-learning activities such as the Community Dinner hosted at St. Paul's Church, Boronia and the breakfast club at a local secondary school provide opportunities for our students to practically support those in need.

Students are actively involved in organising and managing regular fundraising projects for our list of charities. All students from Years 7 to 12 contribute to these initiatives, fostering a spirit of service throughout the student body.

How to Apply

Thank you for considering Waverley Christian College for your child's education. Our commitment to academic excellence, exceptional facilities, and a Christ-centred community ensures that every student has the opportunity to flourish academically, spiritually, socially, emotionally, and physically.

To apply, families are required to complete an **Application for Enrolment form** (available on our website), and submit it with the following documents:

- Pastoral Letter of Recommendation – A letter from your pastor or church leader confirming that at least one parent is a practising Christian and that the parent(s) and children attend church in person on a regular basis.
Must be on church letterhead, dated and signed
- A copy of the student's birth certificate
- Receipt for the \$100 Application Fee (\$300 for International Students) (please include a copy of the payment receipt when submitting your application to your preferred campus).

Email your complete application to the Campus of your choice:

Narre Warren South: enrolnws@wcc.vic.edu.au

Wantirna South: enrol@wcc.vic.edu.au

You will receive an email with the outcome of your application once it has been processed.

Narre Warren South

20 College Drive
Narre Warren South, VIC 3805

(03) 8765 7700
enrolnws@wcc.vic.edu.au

Wantirna South

1248 High Street Road
Wantirna South, VIC 3152

(03) 9871 8600
enrol@wcc.vic.edu.au

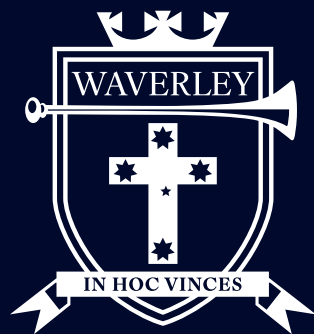


ABN: 48 847 193 961 | Reg No: A0018722X | CRICOS: 01958D



WAVERLEY CHRISTIAN COLLEGE





WAVERLEY
Christian College

wcc.vic.edu.au